

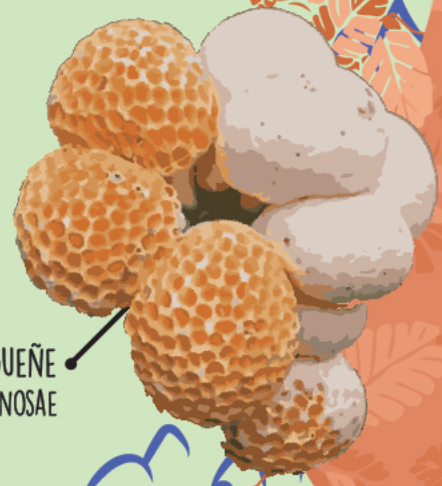
# RUTA DEL MAYER



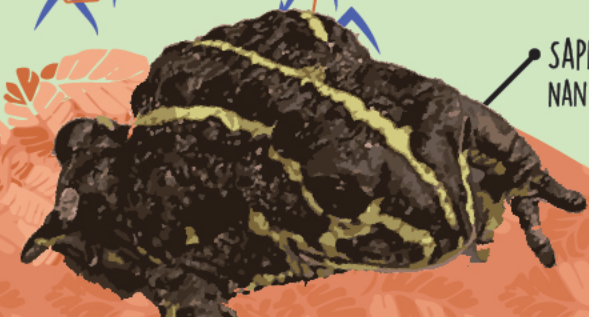
HUEMUL  
HIPPOCAMELUS BISULCUS



DIGUEÑE  
CYTTARIA ESPINOSAE

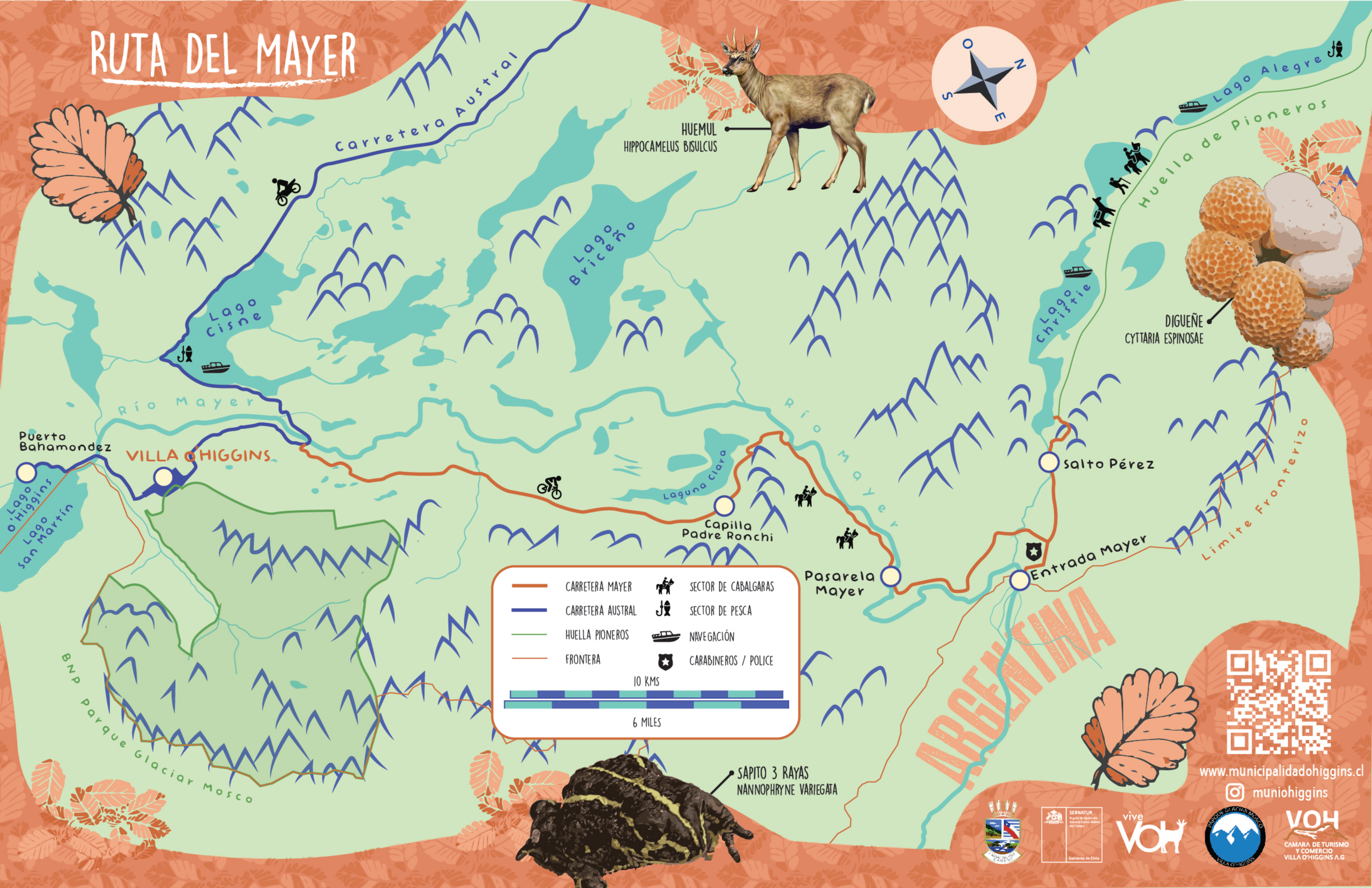


SAPITO 3 RAYAS  
NANNOPHYRNE VARIEGATA



|  |                   |  |                      |
|--|-------------------|--|----------------------|
|  | CARRETERA MAYER   |  | SECTOR DE CABALGARAS |
|  | CARRETERA AUSTRAL |  | SECTOR DE PESCA      |
|  | HUELLA PIONEROS   |  | NAVEGACIÓN           |
|  | FRONTERA          |  | CARABINEROS / POLICE |

10 KMS  
6 MILES



[www.municipalidadohiggins.cl](http://www.municipalidadohiggins.cl)

muniohiggins





# LAGO O'HIGGINS

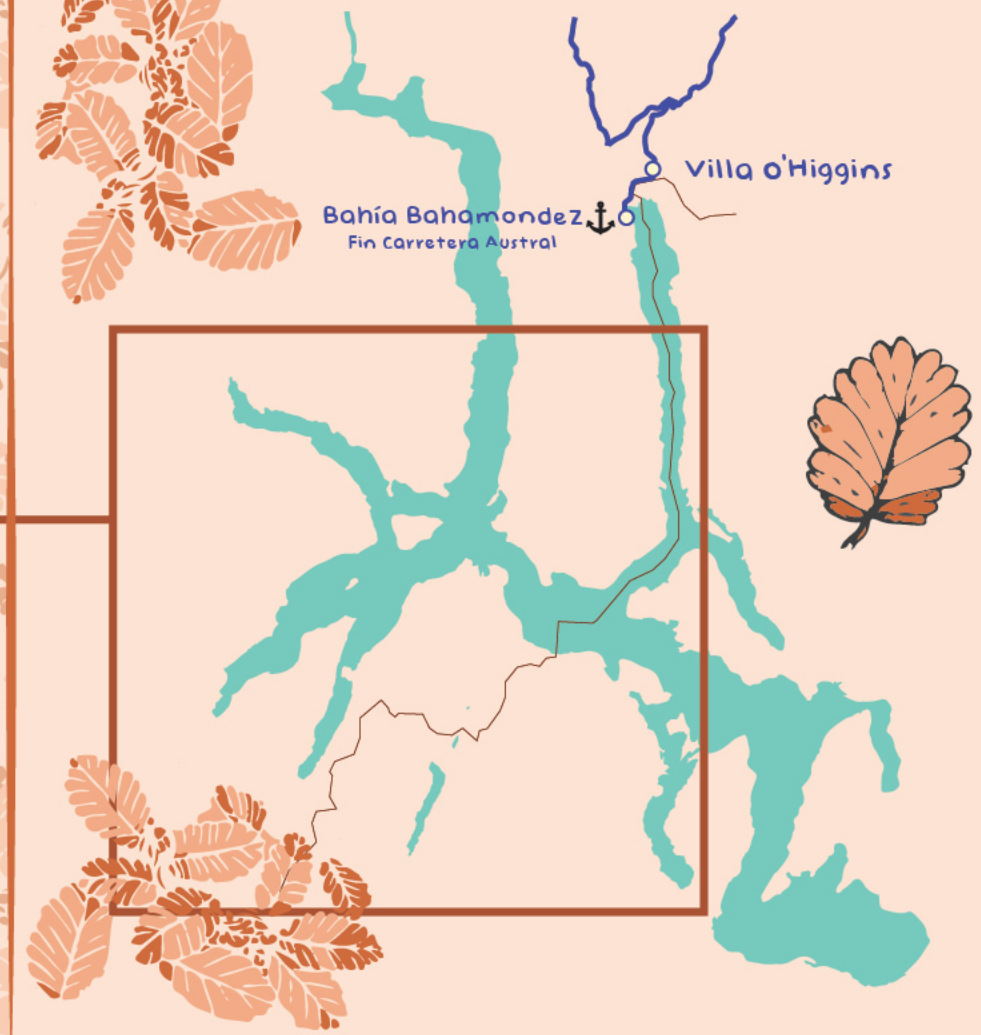


MORILLA MORCHELLA CONICA



## MAPA SECTOR MAYER Y MAPA DEL LAGO O'HIGGINS

Vive **Villa O'Higgins**



CORTINARIUS  
COTRINARIUS MAGELLANICUS

a El Chaltén  
to El Chaltén